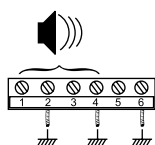
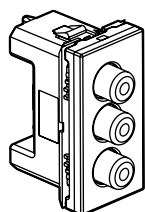
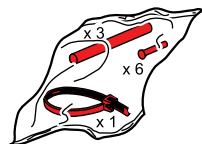
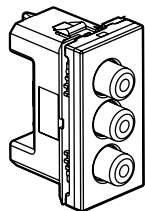


■ **Technical data**

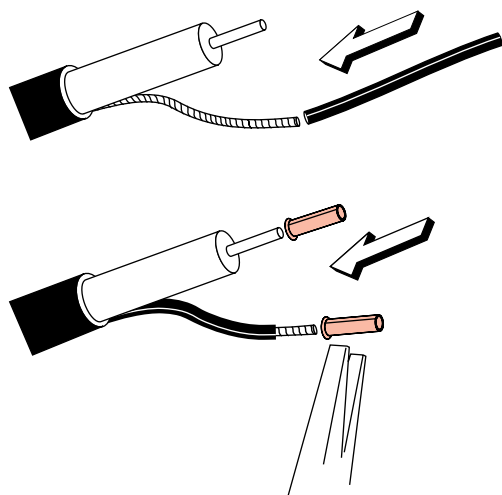
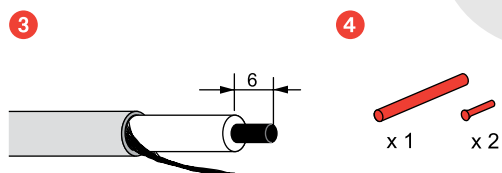
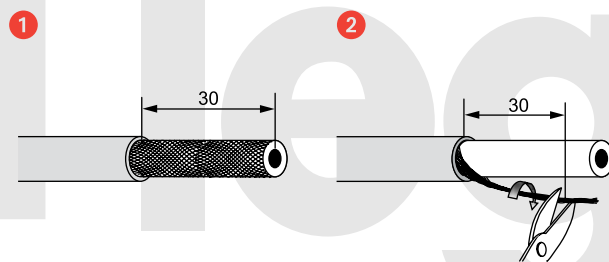
Cat.Nos 6730 57 - 6731 57

**AV connector**

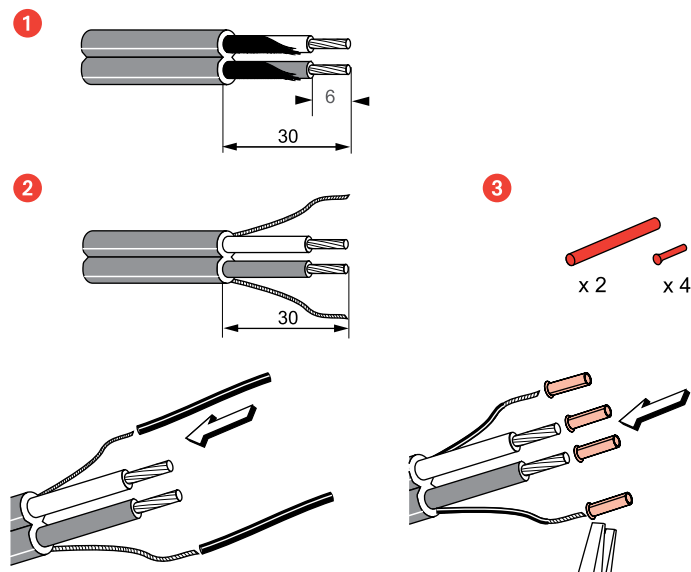


- 1 - Right
- 2 -
- 3 - Left
- 4 -
- 5 - Video
- 6 -

**Wiring diagram**



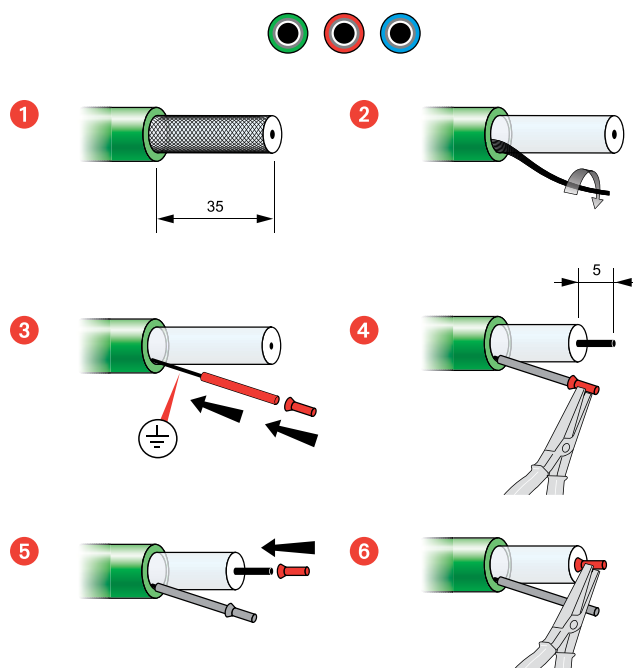
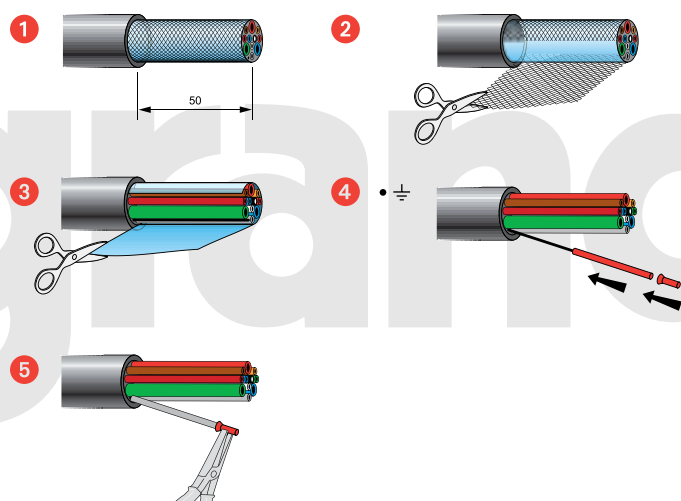
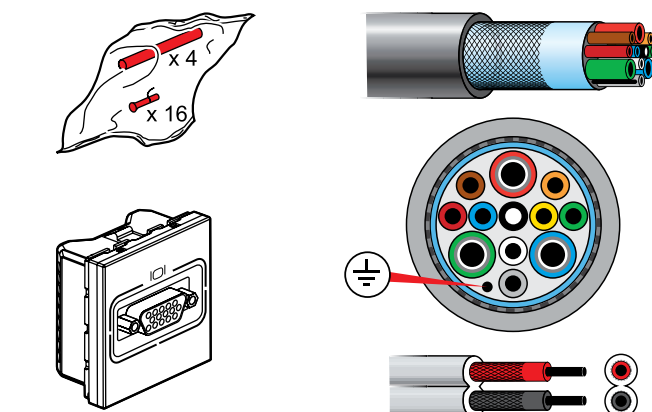
## AV connector



## Technical data

Cat.Nos 6730 59 - 6731 59

## Wiring diagram of projector connector



## ⚠ Safety Instructions

GB IE

This product should be installed in line with installation rules, preferably by a qualified electrician. Incorrect installation and use can lead to risk of electric shock or fire.

Before carrying out the installation, read the instructions and take account of product's specific mounting location.

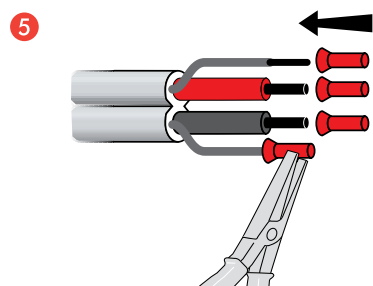
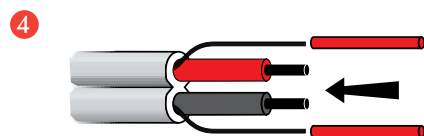
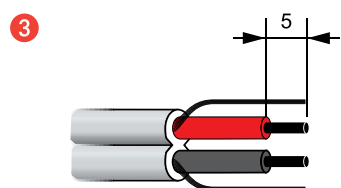
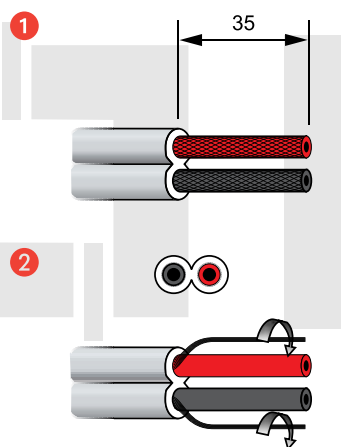
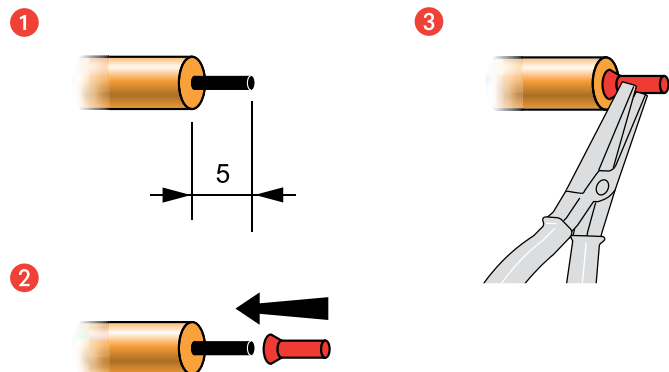
Do not open up, dismantle, alter or modify the device except where specifically required to do so by the instructions.

All Legrand products must be opened and repaired exclusively by personnel trained and approved by Legrand.

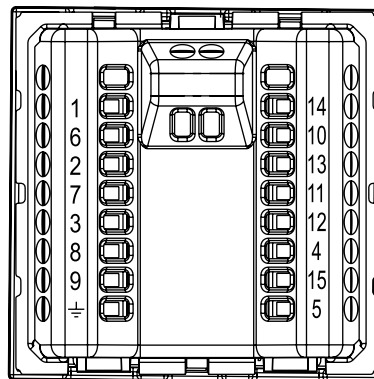
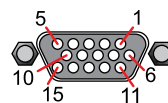
Any unauthorised opening or repair completely cancels all liabilities and the rights to replacement and guarantees.

Use only Legrand brand accessories.

### Projector connector



### Projector connector



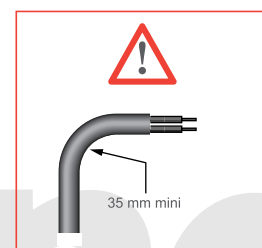
### Terminal block legend (Connector legend)

#### VGA FULL PIN

- 1 Red coax (red)
- 6 Red braid (red ground)
- 2 Green coax (green)
- 7 Green braid (green ground)
- 3 Blue coax (blue)
- 8 Blue braid (blue ground)
- 9 White
- 14 Green (VS)
- 10 Blue (HS-VS ground)
- 13 Grey (HS)
- 11 Brown (ID Bit 0)
- 12 Yellow (ID Bit 1)
- 4 Orange (ID Bit 2)
- 15 Black (ID Bit 3)
- 5 Red (Gnd)
- ≠ General ground

#### VGA RGB HS VS

- 1 Red coax (red)
- 6 Red braid (red ground)
- 2 Green coax (green)
- 7 Green braid (green ground)
- 3 Blue coax (blue)
- 8 Blue braid (blue ground)
- 14 Yellow coax (VS)
- 10 Yellow braid + white (HS-VS ground)
- 13 White coax (HS)
- ≠ General ground



### ! Safety Instructions



This product should be installed in line with installation rules, preferably by a qualified electrician. Incorrect installation and use can lead to risk of electric shock or fire.

Before carrying out the installation, read the instructions and take account of the product's specific mounting location.

Do not open up, dismantle, after or modify the device except where specifically required to do so by the instructions. All Legrand products must

be opened and repaired exclusively by personnel trained and approved by Legrand. Any unauthorized opening or repair completely cancels all liabilities and

the rights to replacement and guarantees. Use only Legrand accessories.