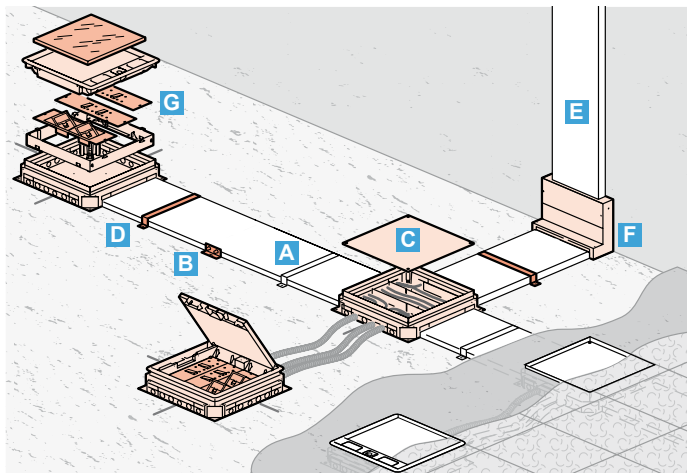


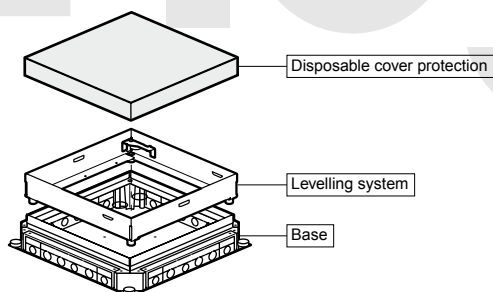
## System overview



- A** Raceways
- B** Coupler
- C** Junction box
- D** Fixing bracket
- E** Vertical trunking such as DLP
- F** Riser
- G** Floor box (back-box + lid and trim)  
Socket outlets and data socket plates to be ordered separately

## Backbox Cat.Nos 6896 34 and 0896 04

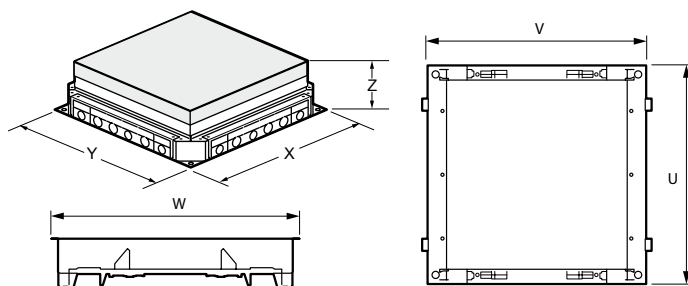
The backbox should be fixed directly on the slab.  
The backbox has to be equipped with wiring accessory plates and lid & trim.  
The backbox allows deviation of power and data cable:  
Adjustable height from 65 to 90mm.  
Side plates are pierced to suit raceways and are supplied with knockouts to fit conduits (20 or 25mm diameter).  
Backboxes consist of a base, levelling system and a disposable cover protection



## Dimensions

### Backbox (mm):

Cat.Nos	X	Y	Z
6896 34 / 0896 04	325	325	90



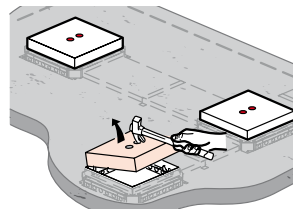
### Metal frame (mm):

Cat.Nos	W	V	U
6896 34 / 0896 04	276	264	264

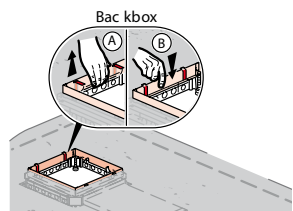
## Installation principle

### Backboxes are to be used with lid & trim

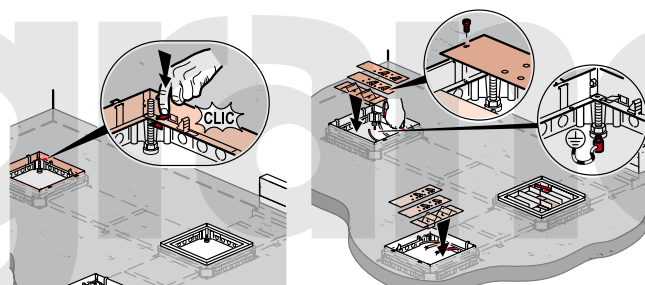
Once the screed is dry, remove disposable cover protection



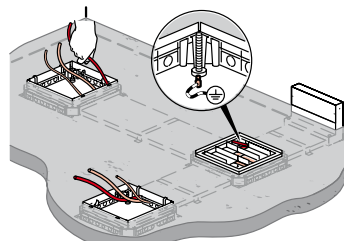
To install the backbox:  
Lift the frame (A) and retainers will automatically drop out (B).



Lock the frame onto the backbox by pushing down clips onto the threaded rods in each corner.



Connect wiring to accessory plates and them fix to the backbox. Finally, earth the system.



Fit carpet and clip the lid and trim onto the backbox (push and fit principle)

