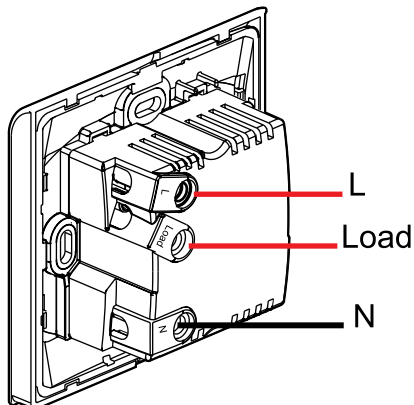


## ■ Technical data

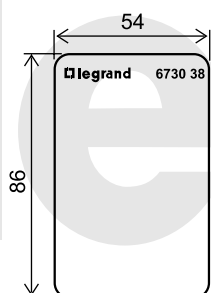
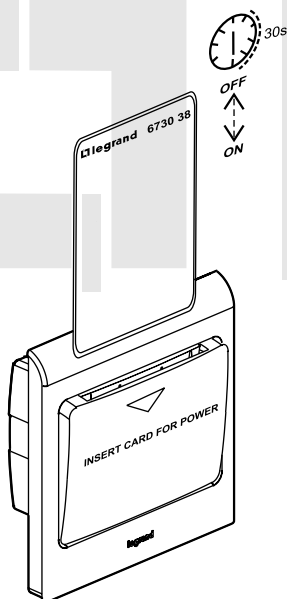
Cat.Nos 6730 37 - 6731 37

### Wiring diagram of key fob switch



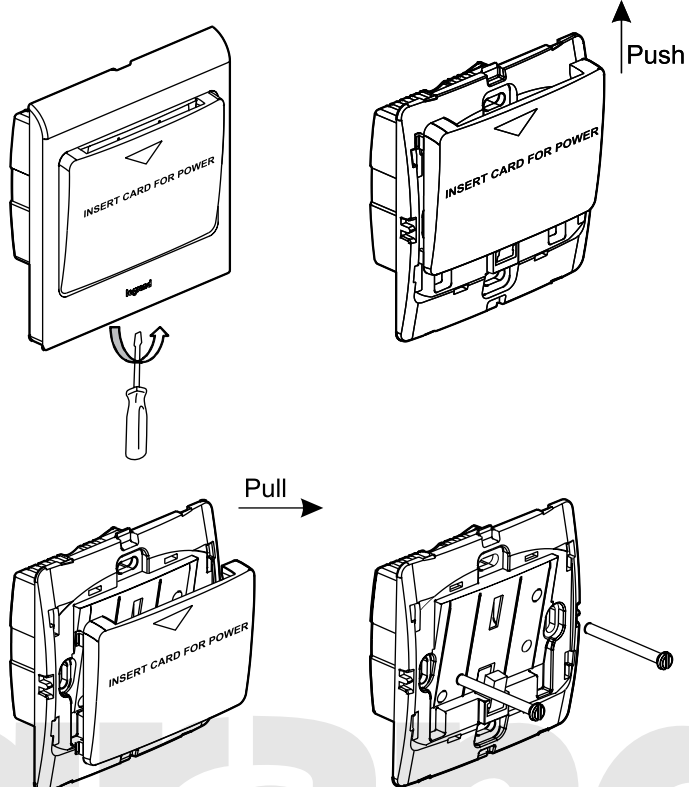
### Operation

Inserting card turns power on  
Removing card turns power off after an approx. 30s delay



Card dimension:  
(Standard credit card dimension)

### Disassembly



### Characteristics

	15A max
	15A / 230V~ $\mu\cos\phi = 1$
	4A / 230V~ $\mu\cos\phi = 0.6$

### Utilization

	①	②	③	④
25°C 230 V 50 Hz			Ø26 Ø38	Ø26 Ø38
Max.	1800 W	800 W	400 VA	800 VA

1. 1800 W incandescent or halogen with ferromagnetic transformer
2. 800 W inductive (motor)
3. 400 VA compensated fluorescent
4. 800 VA fluorescent with electronic ballast

### Important

For load higher than indicated in the above table, use a contactor.